

DIE GAFFERWAND

Product description

The inflatable privacy screen
for temporary usage.



The “Gafferwand” shield the victims

The desire to witness a catastrophe isn't anything new. Neither is the fact that people spectate the suffering of others without any respect or piety. However in this digital age, that behavior can go to the extreme . Many onlookers have lost any form of inhibition. Thus empathy and decency fails us as we become spectators .Without paying any respect to the victim, bystanders take photos or videos and post them online. All that just because the bystanders want to self-stage online.

The “Gafferwand”

Is a privacy screen that can fit into any trunk. To summarize: the “Gafferwand” is 20m (65.6ft) long and 2.10m (6.89ft) high. The screen can be set up by only 2 people in under 2 minutes at any place no matter the time or weather. The standard “Gafferwand” weighs around 27kg (59.5lbs). Transport volume: 1.04m x 0.35m x 0.35m (3.41ft x 1.15ft x 1.15ft). You'll need a compressor (220 Volt) and 9 sandbags with a weight of around 10 to 12kg (22 to 26.5lbs) as ballast. With the “Gafferwand”, areas can be shielded from the public eye for a longer time. Firefighters, rescue services, police, disaster relief agencies (german: THWs), towing companies as well as airports are using the “Gafferwand” already.



Photo: Castle Ludwigslust, Mecklenburg-Vorpommern:
The “Gafferwand” is produced in Ludwigslust.

Content:

Page 4 Assembly and disassembly of the "Gafferwand"

Page 5 The Sand-Bags and technical information

Page 6 The visible areas - banners and design suggestions

Page 7 Safety and service information
Repair and restoration

Page 8 Construction of the "Gafferwand"

Page 9 Dimension of the "Gafferwand"

Page 10 Questions and tips for operation

Page 11 The "Gafferwand-MINI"

Page 12 Assembly and disassembly of the
"Gafferwand-MINI"

Page 13 Technical Information for the
"Gafferwand-MINI"

Page 14 Special models

Page 15 Warranty

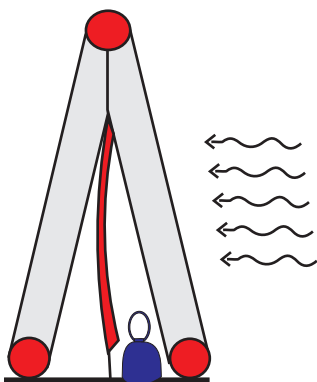
Page 16 Contacts



Photo: Presentation of the "Gafferwand" on the show "Die Höhle der Löwen" (the German "equivalent" of the show "Shark Tank")
VOX 2 0 1 9

Assembly

- Pull out the handles from the side and carry it to the operation site.
 - Loosen the velcros straps.
 - Place a Sand-Bag on the first GfK-rods.
 - Lift the roll, roll it out the desired way.
 - Place the rest of the Sand-Bags on the GfK-rods.
- Attention :** Don't place any Sand-Bags on the fabric or straps. Pay attention to the wind direction .You must place the Sand-Bags on the side from where the wind is coming from.
- Connect the air-intake to the compressor. Turn it on. **DONE!**



Disassembly

- Turn off the compressor.
- Loosen and remove the air-intake hose.
- Remove the Sand-Bags.
- Put the fabric-parts on the PVC-base.
- Roll it up tightly. The carabiners/snap hooks must face outwards.
- Close the closures and take it away.
- Push the handles back into the roll.

Assembly video:
"Vorführung der Gafferwand"
(Demonstration of the "Gafferwand")
www.stefan-rauch.at



 YouTube



The Sand-Bags



You must fill the Sand-Bags before the first assembly.



We have used a new locking technique since 2020.



Fill half of the Sand-Bag with dry sand, gravel or water. It should now weigh around 100 kg (220-260 lbs).



Roll it up from the top and close it. You should now have a handle on top.

Dimensions

The "Gafferwand" Standard edition (20) (6.5 ft) long when packed up: 10cm (3.9 in) long - rolled diameter of around 35-38cm (1.4-1.5 ft) weighs

around 2 kg (5 lbs) Sand-Bags (9 Bags for 20):

Diameter: 22cm (8.7 in) - Height: 35cm (1.4 ft)

Weight when filled: 100-120 kg (220-260 lbs)

Gibbons compressor

1 kv5 PS Diameter of the funnel: 20cm (8 in)

Weight: around 2 kg (5 lbs)

Dimensions: 40cm x 56cm x 55cm (1.6 x 2.2 x 2.1 ft)

Max. air performance: around 259m³ (9150ft³) per hour. Noise level: around 86dB

The visible areas/banners

The banners for every privacy screen can be designed freely in color. The print is a 4C - Dye Sublimation Print

The banners are 2 . 301 . 50 7 . 15x54 . 19 211.

They are connected to the inflatable

frame via velcro fasteners. The lower area is attached by straps. There are 2 slits for airflow.

The fabric of the banners as well as the fabric of the frame is translucent.

Therefore, mounting extra light sources becomes unnecessary.

That role can be fulfilled by

spotlights or automotive headlights. For safety reasons we

attach extra reflective strips to the

carrying-frame.

Design suggestions



Safety and service information

The privacy screen is not intended for traffic management.

Compressor: The Compressor is a product of the brand Gibbon, 2200 performance 1500Watt.

The terms of the manufacturer apply.

The suction opening must be protected during heavy rain.

The materials of the privacy screen apply to the B1 Norm, thus they aren't categorized as non-flammable!

The "Brandschutzklasse B1" (fire protection class B1) is for materials or products that will -according to the in Germany applying(?) "Brandschutznorm DIN 4102-1" (fire protection standard DIN 4102-2)- extinguish themselves after removing the source of the fire.

In general: extinguish the fire first then assemble the wall!

The air pressure inside is strong enough for it to be used even when it's windy. During strong winds the wall may tilt to the side a little, but it will return to its normal position by itself.

However, the "Gafferwand" will not move from the area where it was deployed. This is intentional, so no parts will fly around when for example a rescue helicopter has to land. If the "Gafferwand" gets dirty in any way, the fabric can be cleaned rather easily with your standard, solvent-free and biodegradable detergent. Put the privacy screen into the washing machine at 40°C (104°F). The hose's frame can be cleaned with a pressure washer (from "Kärcher" for example).

Repair and restoration

Our service for you:

All "Gafferwand" units are internally standardized.

All components are interchangeable.

If necessary all parts can be replaced in 24 to 48 hours to ensure the "Gafferwand" is ready for action at all times. Since all customers are registered, we are able to deliver the design of the personal banner quickly. If there is a damaged banner you will receive a neutral banner at first. That one will be replaced later by your personal banner, since re-printing of a personal banner can take up to 10 days.

Construction of the "Gafferwand"

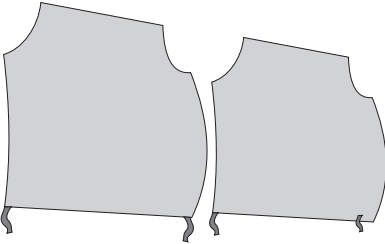
The "Gafferwand" consists of 3 parts.

The frame, the base, and the privacy screens/banners.

The frame and base are connected to each other through snap hooks. There are GfK rods built into the underlayment. There is also the retractor at the end of the base.

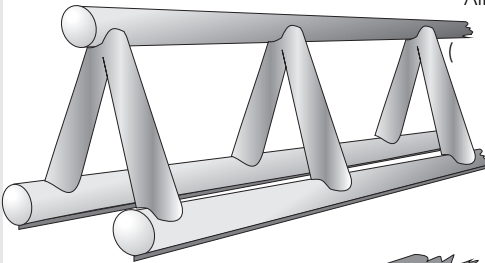
The privacy screens/banners are attached to the frame through Velcro straps.

The sketches are not true to scale.



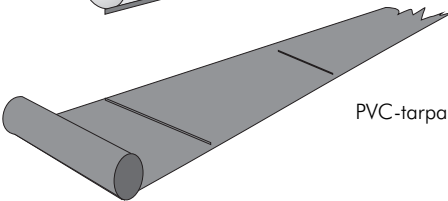
Privacy screen area

Air-permeable fabric 1 100m²
 (0 . 3 / 6 e e t²)
 Your choice in color and print with Velcros
 Exchangeable



Carrying frame

Airproof ripstop nylon 6 00 7 0 / m²
 (0 . 1 0 9 0 . 2 2 3 f t²)
 Sewn with high-quality tear-resistant yarn.



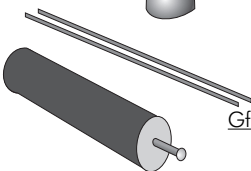
PVC Base

High-strength PVC-tarpaulin-fabric 6 5 0 / m²
 (2 . 4 2 / 3²)



Sand-Bags

Waterproof PVC Content Dry gravel or sand 1 00 1 2 g
 (2 20 2 6 l b s)
 (use 9 Bags for 2 0)



GfK tube reinforced with glass fiber

Rolling pin for transportation

PVC-tube: 1 0 0 1 0 0 m m
 (3 . 9 3 4 x 3 9 i n c h)
 Aluminum-tube-system, extendable

Dimension of the "Gafferwand"

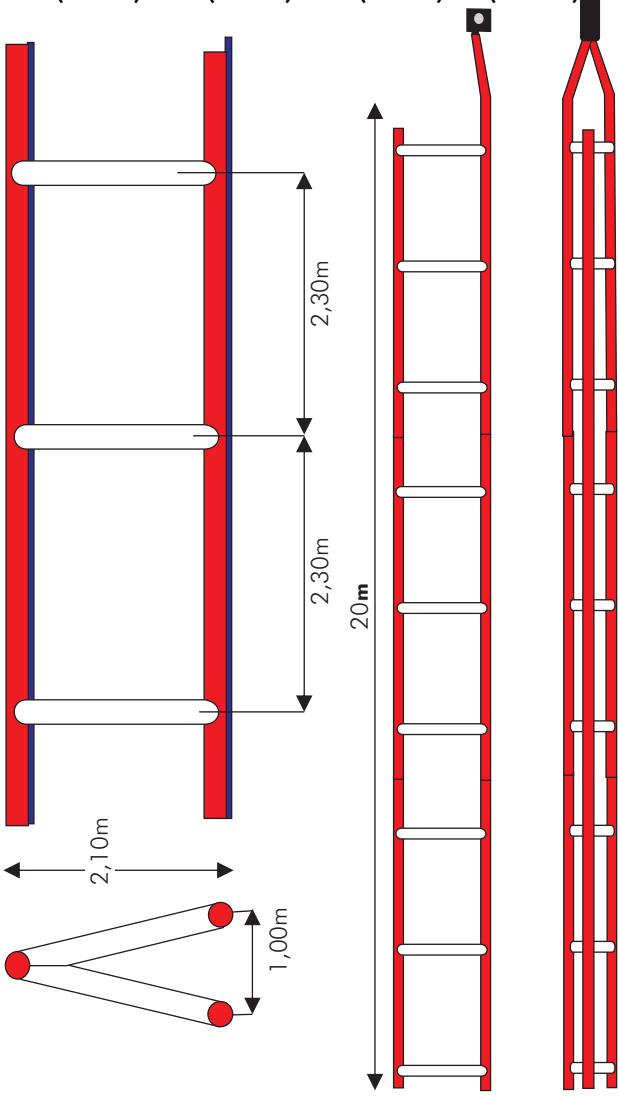
The "Gafferwand" Standard is around 2 m (6 5 ft) long and 2 . 1 0 6 . 8 9 gh.

We are able to produce a wall that is either longer or shorter without any problems.

Our longest variant is 3 m (9 8 ft) long with 1 2 privacy screens.

Our shortest variant is 1 m (4 9 ft) with 5 privacy screens.

2 . 1 0 7 . 8 4 2 . 1 0 6 . 8 9 1 . 1 0 3 . 8 2 m (6 5 ft) 6



Questions and tips for operation



Photo: Production, service and final inspection in Ludwigslust

Cleaning

The privacy screens can be removed easily. Put them in the washing machine at 40 °C (104°F). The frame can be cleaned with a pressure washer.

Damaging the frame while it's deployed

If the frame gets damaged, the hose section in front of and behind the damaged area must be tied shut with zip ties. The "Gafferwand" will continue standing.

Packaging the "Gafferwand" during rain

If the "Gafferwand" gets used during rain and gets wet it can be rolled up as usual. After rolling it up let it stand upright for 10 minutes so the water can run out. Then assemble it once more on a dry day so it can dry off.

How does the "Gafferwand" behave during storms

Generally speaking the "Gafferwand" can be used no matter the weather.

It will endure any wind force up to a level 7 on the Beaufort scale. Even during strong gusts of wind the "Gafferwand" does not fly away, but instead tilts to the side. You also don't have to roll up the "Gafferwand" if a helicopter is about to land. Simply turn it off and then on again after take-off.



Photo: 2017 test on a field during a storm with wind force of level 9-10 with the FF Zierzow

The "Gafferwand-MINI"

(without a fan)

The "Gafferwand-MINI" can be deployed at any place, no matter the weather or time! Assembly usually takes 1 to 2 minutes. Its low weight, small dimensions and easy handling makes this product an important tool for the task forces on-site. There is no need for a compressor.

The "Gafferwand-MINI" is a great asset for fire department, police force, disaster relief services or towing service as it can shield a small area from the public eye for an extended period. Thus shielding the victims from onlookers.

-no individual parts since everything is one piece

-weighs around 12kg (26.45 lbs)

-dimensions when packaged: 1m x 0.125m x 0.125m x 0.125m

-dimensions when assembled: 8m x 2m (26.25 ft x 6.56 ft)



Tested on the 7th of September by the "Feuerwehr Magazin"



You design the print!





Assembly of the "Gafferwand-MINI" (IMPORTANT)

- Assembly is only for 1 or 2 people
- Always use Sand-Bags
- The Sand-Bags must be filled beforehand

1. Lay down the "Gafferwand-MINI" at the desired position.
2. Carefully pull it open by the handles (1).
3. Insert the end-rods (2) into the hose. Put down one Sand-Bag for every rod.
4. Open all closures.
- 5 Lift the supports - during that the fall-cases (3) slide into place. Close the upper ends with the present snap hooks.
- 6 Once all supports are raised you only have to position the Sand-Bags correctly. Pay attention to the wind-direction. Always play the bags on the side where the wind is coming from.

Disassembly of the "Gafferwand-MINI"

- 1 Merge the supports by lifting the fall-cases (3) and opening the snap hook. Fix them to the ground-rods with the closures.
- 2 Remove the Sand-Bags.
- 3 Remove the end-rods (2).
- 4 Fold it once so that the handles (1) lay over each other.
- 5 Roll it up from the middle and close it with the belts.



Video on YouTube. Search: Gafferwand-MINI  YouTube

Technical Information

Base: PVC 6500m² (2 . dz/3eet²)

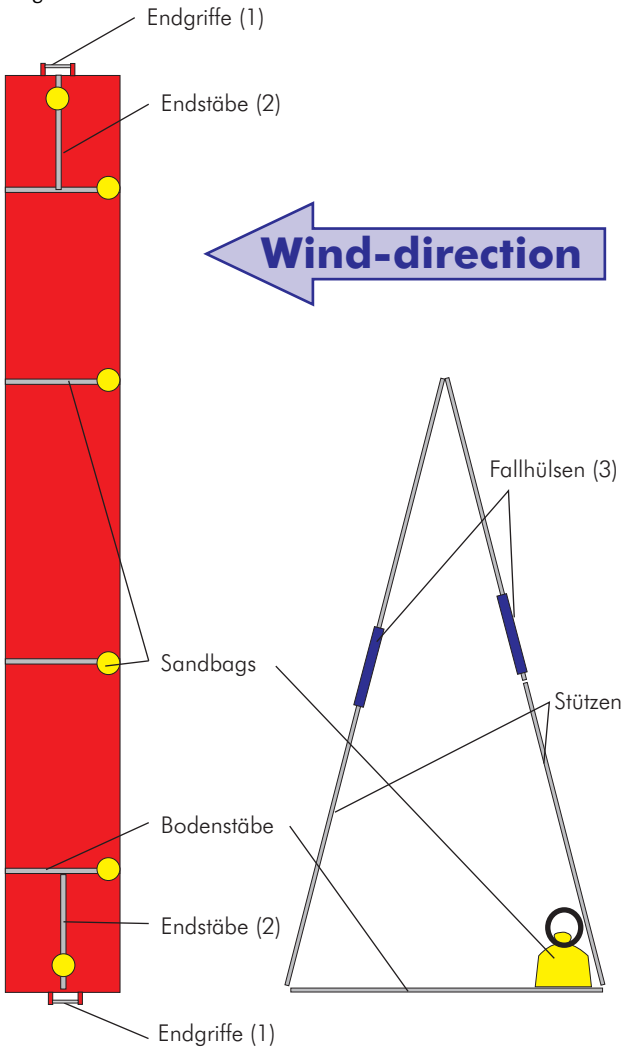
Banner: 1800m x 800m (5 ft 9 2 6 . ft) 2 4
of B 1 fabric with print

Braces: Aluminium-tubes grouted with steel cables, connected to fall-cases (3) and screwed to the base.

The "Gafferwand" gets delivered assembly-ready.

It can be used as soon as the Sand-Bags are filled.

The "Gafferwand-MINI" can even be assembled at a slight angle.



Special models

"Supergafferwand" 3 m (9 8 .ft) long and 2 . 5 0 (7 . 5 ft) high. It has extra GfK-rods for more resistance to storms for the Airport Frankfurt am Main



Video: Test durch das THW Ludwigslust 2 0 1 8

"Gafferwand - Rollcontainer" from the Albert Ziegler GmbH coming to you 2 0 0 2



A privacy screen for the entrance area. Ready in just a few minutes!



Photo: The passage closes itself through sewn in magnetic locks.

"Laserschutzwand" (laser protection wall) 1 5 x 2 . 5 0 (4 9 .ft x 8 ft) highly flexible and stable



Photo: 2 0 1 8 final assembly in Ludwigslust

Warranty

The company **gi german inflatable**, Dieter Mohn, Grandweg 8, 19286 LUDWIGSLUST grants customers of the "Gafferwand" 2 years of warranty.

gi german inflatable guarantees a perfect functionality of the "Gafferwand" when used in the intended manner for a limited time. The two-year warranty begins once the product has been purchased for the first time by a customer.

The warranty only applies if there are not any non-gi (german inflatable) modifications made to the "Gafferwand". The warranty may be voided if any chemical or physical influences damage any of the materials beyond reasonable wear-and-tear (this could happen through cleaning the "Gafferwand" with wrong detergents or it coming into contact with sharp edges/corners for example).

The warranty is only valid if the product was bought in the European Union (EU) or Switzerland and delivered by gi german inflatable to one of their sales partners.

Other **gi german inflatable** products that were bought in a different way are excluded from the warranty.

During the warranty, gi german inflatable will repair your product for free or deliver you replacement of equal value. If you have a complaint with the product, present it to the seller with proof. The seller will contact us immediately. The warrantee has to pay for fees, postage costs and alike.

Any demands made that are not listed in this warranty document are not applicable to the warranty and will be excluded. The generally applicable legal rights of the consumer are

untouched by this warranty document.

Ludwigslust 24.09.2017





german
inflatable

gi german inflatable
Dieter Mohn
Grandweg 8
19288 Ludwigslust

Kontakt:

Telefon +49 1520 8200 944
info@gafferwand.de



www.gafferwand.de

Diese Produkte sind
gesetzlich geschützt
durch EU- und US-Patent
All products in here are
protected through EU-patent
and US-patent.

